



MONTHLY MEMBERSHIP PROGRESS REPORT

District 26 M3

Results as of: 3/31/2016

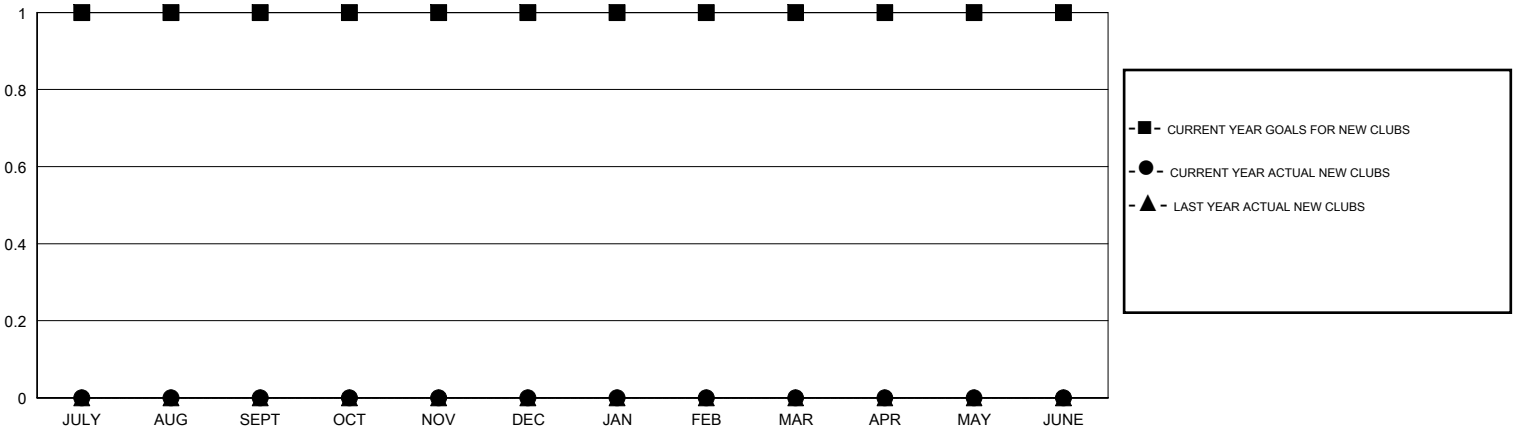
GMT: HAL GRIFFIN

LOCATION MISSOURI

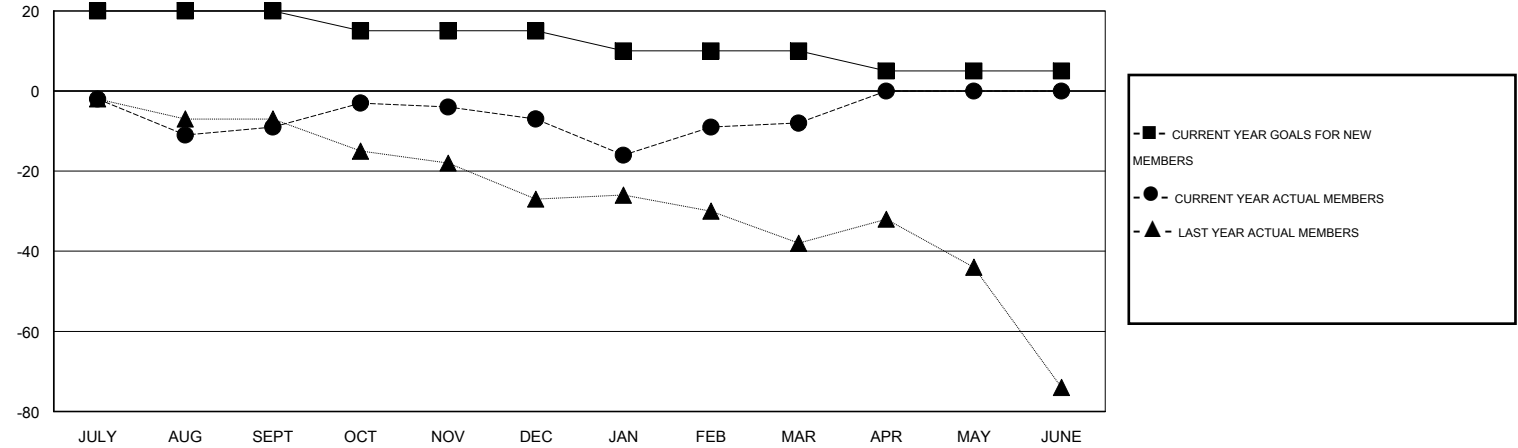
GMT CA 1

Clubs					Members				
RESULTS FOR 2015-2016					RESULTS FOR 2015-2016				
QUARTER	NEW CLUB GOAL	NEW CLUBS	DROPPED CLUBS	NET GAIN/LOSS	QUARTER	NEW MEMBER GOAL	CHARTER AND NEW MEMBERS ADDED	DROPPED MEMBERS	NET GAIN/LOSS
JULY/AUG/SEPT	1	0	0	0	JULY/AUG/SEPT	20	43	52	-9
OCT/NOV/DEC	0	0	0	0	OCT/NOV/DEC	-5	24	22	2
JAN/FEB/MAR	0	0	0	0	JAN/FEB/MAR	-5	32	33	-1
APR/MAY/JUNE	0	0	0	0	APR/MAY/JUNE	-5	0	0	0

GOALS AND ACTUAL NEW CLUBS CUMULATIVE



GOALS AND ACTUAL MEMBERS CUMULATIVE



DROPPED CLUBS: 0	33 CLUBS OF 59 ADDED 1 OR MORE NEW MEMBERS	<u>GENDER DISTRIBUTION</u>
		MALE 1,077 (76.98%)
		FEMALE 322 (23.02%)
<u>DROPPED MEMBERS</u>	CLICK HERE FOR HEALTH ASSESSMENT DATA	FAMILY UNIT MEMBERS 126
DECEASED 10		HEAD OF HOUSEHOLD 61
CLUB CANCELLED 0		NON-HEAD OF HOUSEHOLD 65
OTHER 97		
TOTAL 107		